

PROPERTY LINE. REFER TO SITE PLAN.

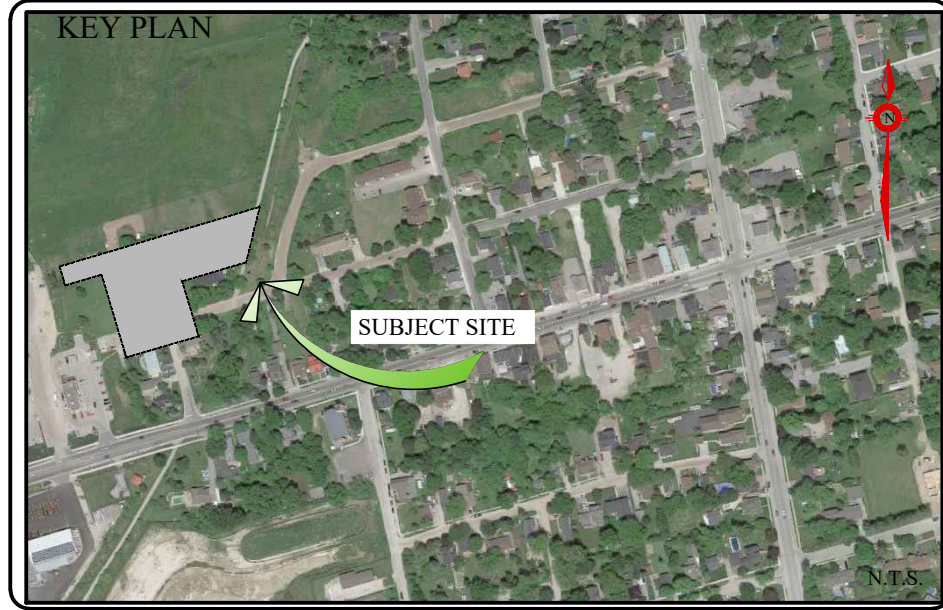
EXISTING TREES ON SITE. REFER TO TREE INVENTORY LIST ON TP-1

#34

EXISTING TREE NUMBER. REFER TO TREE INVENTORY LIST ON TP-1

LEGEND

Tree #	Nr. of trees	Botanical Name	Common name	DBH cm	Height m	Crown Ø (m)	Maturity	Health conditions	Location
1	1	<i>Malus domestica</i>	Common Apple	20	5	6	Mature	Poor	multi-trunk, leaning
2	1	<i>Populus tremuloides</i>	Trembling Aspen	65	14	7	Mature	Poor	deadwood
3	1	<i>Populus tremuloides</i>	Trembling Aspen	70	20	7	Mature	Poor	leaning, vines
4	1	<i>Populus tremuloides</i>	Trembling Aspen	24	10	3	Mature	Fair	asymmetric, bark injuries
5 (row) 4		<i>Thuja occidentalis</i>	Eastern White Cedar	±35	9	7	Mature	Fair	
6	2	<i>Thuja occidentalis</i>	Eastern White Cedar	±10	8	3	Mature	Poor	
7	2	<i>Acer negundo</i>	Manitoba Maple	40	8	8	Mature	Poor	leaning
8	1	<i>Picea glauca</i>	White Spruce	32	20	8	Mature	Fair	
9	1	<i>Acer negundo</i>	Manitoba Maple	12	5	6	Immature	Poor	
10	1	<i>Abies balsamea</i>	Balsam Fir	11	5	2	Immature	Fair	
11	2	<i>Thuja occidentalis</i>	Eastern White Cedar	22,30	11	4	Mature	Fair	
12	1	<i>Juglans nigra</i>	Black Walnut	12	4	4.5	Immature	Good	
13	1	<i>Abies balsamea</i>	Balsam Fir	17	9.5	4	Immature	Fair / Good	0.2m on Adjacent Site
14 (bridge row)		<i>Thuja occidentalis</i>	Eastern White Cedar	±10	9	3.5	Mature	Good	0.5m-1m on Adj.
15	1	<i>Pinus sylvestris</i>	Scots Pine	15	4	3.5	Immature	Fair / Good	4.5m to Property Line
16	1	<i>Acer saccharum</i>	Sugar Maple	34,5	12	9	Mature	Fair	forked in 3 @1.5m on PL
17	1	<i>Acer saccharum</i>	Silver Maple	90	13	10	Mature	Poor / Fair	declining health 2m on Adj.
18	1	<i>Picea pungens</i>	Blue Spruce	45	18	8	Mature	Fair	
19	1	<i>Acer negundo</i>	Manitoba Maple	25	10	10	Mature	Fair	multi-trunk



GENERAL NOTES

CONTRACTOR IS RESPONSIBLE FOR ALL LOCATES INCLUDING ALL UNDERGROUND SERVICES PRIOR TO ANY EXCAVATION OR INSTALLATIONS.

ANY ACCOMPANYING DOCUMENTATION RELATING TO THE PRESERVATION PLAN SUCH AS TENDER DOCUMENTS AND CHANGE NOTICES ARE TO BE ENDORSED BY JOHN D. BELL ASSOCIATES LIMITED PRIOR TO THE BEGINNING OF ANY SITE WORKS. IN THE EVENT THAT OF A DISCREPANCY THE DRAWING SHALL BE ASSUMED CORRECT.

IT IS THE RESPONSIBILITY OF THE PERSON OR PERSONS RESPONSIBLE FOR THE CONSTRUCTED WORKS TO NOTIFY THE LANDSCAPE ARCHITECT, A MINIMUM OF 48 HOURS PRIOR, FOR ANY REQUIRED INSPECTIONS AND SIGN OFFS.

SCHEDULED MEETINGS SHALL TAKE PLACE AT THE CLOSEST MUTUALLY CONVENIENT TIME. LAYOUT AND INSTALLATION OF PROTECTIVE HOARDING WITHOUT THE PRESENCE OF THE LANDSCAPE ARCHITECT WILL BE THE CONTRACTOR'S RESPONSIBILITY. THE LANDSCAPE ARCHITECT RESERVES THE RIGHT TO HAVE TREE PRESERVATION FENCE RELOCATED WHETHER INSTALLED OR NOT AT THE COST OF THE CONTRACTOR IN THE EVENT THE LANDSCAPE ARCHITECT WAS NOT PRESENT FOR THE LAYOUT AND INSTALLATION OF THE PROTECTIVE TREE PRESERVATION FENCE.

BASE INFORMATION PROVIDED BY:
RUDY MAK SURVEYING LTD.

SITE PLAN REVISED:

ALL DRAWINGS AND SPECIFICATIONS ARE INSTRUMENTS OF SERVICE AND ARE THE PROPERTY OF JOHN D. BELL ASSOCIATES LIMITED. DRAWINGS ARE NOT TO BE MODIFIED AND/OR REPRODUCED WITHOUT THE WRITTEN CONSENT OF JOHN D. BELL ASSOCIATES LIMITED. REPRODUCTION OF DRAWINGS IN ANY FORM WITHOUT THE CONSENT OF JOHN D. BELL ASSOCIATES LIMITED VIOLATES THE DRAWING AT WHICH TIME JOHN D. BELL ASSOCIATES LIMITED ACCEPTS NO LIABILITY FOR THE DRAWING CONTENT OR WORKS RESULTING FROM SAID REPRODUCTION.

IT IS THE RESPONSIBILITY OF THE CONTRACTOR TO VERIFY ALL DIMENSIONS ON THE SITE AND REPORT ANY DISCREPANCIES OR VARIATIONS FROM THE SUPPLIED INFORMATION TO THE LANDSCAPE ARCHITECT WITH THE PROJECT. JOHN D. BELL ASSOCIATES LIMITED IS NOT RESPONSIBLE FOR THE ACCURACY OF SURVEY, ARCHITECTURAL, MECHANICAL, ENGINEERING OR ELECTRICAL INFORMATION SHOWN ON THE DRAWING. FOR FURTHER INFORMATION REFER TO APPROPRIATE SURVEY, ARCHITECTURAL, MECHANICAL, ENGINEERING OR ELECTRICAL DRAWINGS PRIOR TO PROCEEDING WITH ANY WORKS.

THIS DRAWING IS NOT TO BE SCALED.

THIS DRAWING IS NOT TO BE USED FOR CONSTRUCTION UNLESS IT HAS BEEN SIGNED AND DATED BY THE LANDSCAPE ARCHITECT.

SIGNED _____

DATE _____

TOWN ACCEPTED FOR CONSTRUCTION

TOWN OF INNISFIL DEVELOPMENT ENGINEERING

DATE: _____

TOWN ACCEPTED FOR CONSTRUCTION

TOWN PEER REVIEW ENGINEER

DATE: _____

LANDSCAPE ARCHITECT'S STAMP

JOHN D. BELL ASSOCIATES LTD.

LANDSCAPE ARCHITECT'S STAMP

JOHN D. BELL ASSOCIATES LTD.

Landscape Architecture
Urban Design
Site Planning / Design

274 Barton Ave., Suite 1201
Barrie, Ontario
L4N 5W4

Fax: 705-722-5660
Tel: 705-722-6278

No. REVISION

1. ISSUED FOR TENDER/PERMIT

DATE

OCTOBER 27, 2017

APRVD.

Sgt

PAOLINI SUBDIVISION

WELLINGTON STREET

COOKSTOWN

TOWN OF INNISFIL, ONTARIO

TREE INVENTORY PLAN

TOWN FILE REF. #

SCALE: 1:250

PLOT DATE: OCTOBER 27, 2017

OUR FILE REF. # 1144A-17

DESIGNED BY: SGT/AB

DRAWN BY: SGT/AB

REVIEWED BY: J. D. BELL

TP-1